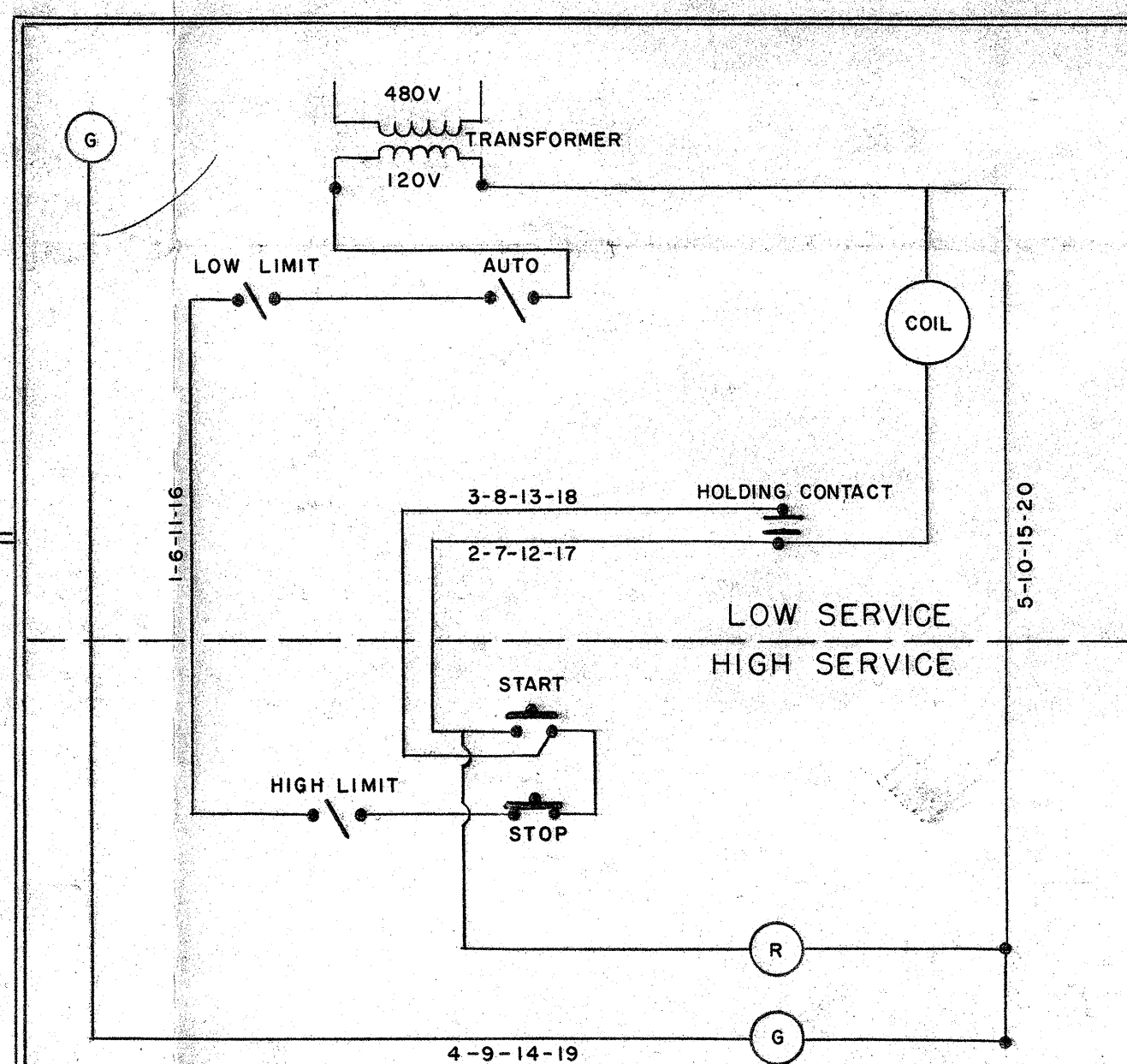
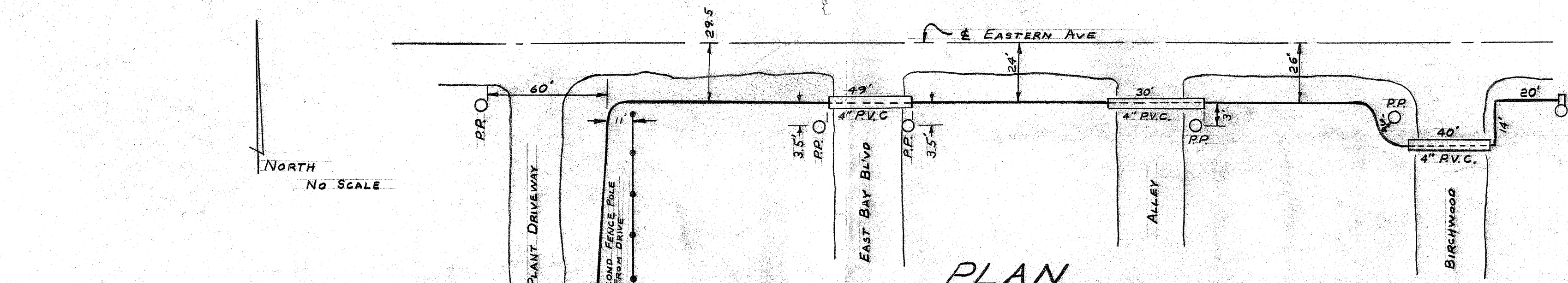


Note: In 1995 R200L Line was installed under Bike Path. While excavating these Lines were disrupted and may not be in the exact locations as shown. They are probably deeper in some areas and shallower in others.



PUMP NO.	LINE
1	1-2 3-4-5
2	6-7-8- 9-10
3	11-12-13-14-15
4	16-17-18-19-20

ELECTRICAL

Low Service Pumps Telemetry Cable

Oct - 1974